

RS Steam Trailer

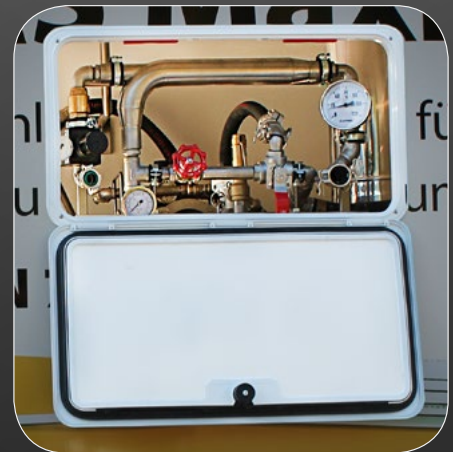
Properties

Closed floor made of slip-resistant screen printing plates, sealed

Walls and roof in plywood, waterproof glued with special plastic coating

Hinged doors incl. door stop, 270° reversible, lockable via espagnolette lock

Powder-coated steel corner reinforcements for added stability



Control panel externally operable



Steam Unit 150

Edging profiles at door opening and rain bar above the door

Torsion-resistant rear portal

Screwed and galvanized german brand chassis

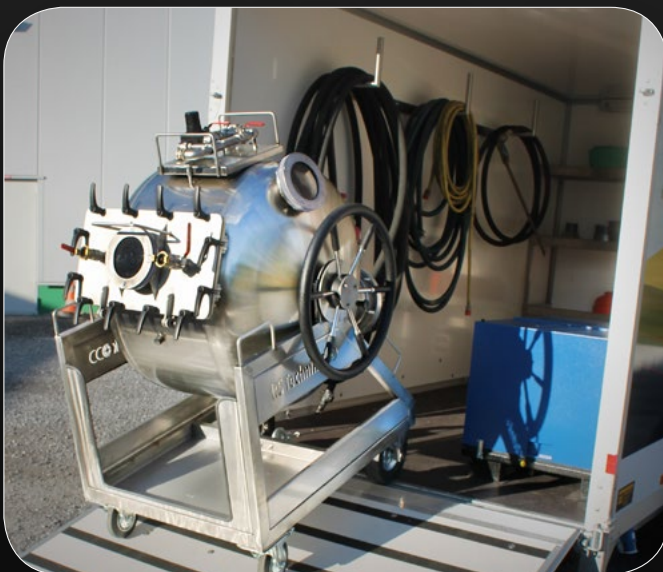
Original Humbaur axle

Maintenance-free rubber spring axles with independent wheel suspension

Braked with automatic reversing



*RS LinerCannon® 600-1000
optionally available*



Technical Specifications

Loading height approx. 530 mm

Permissible total weight: 2500 kg

Payload: approx. 1550 kg

Inner box dimensions: 4010 x 1810 x 2000 mm